

Buxton & Skinner  
Printing and Stationery Co.  
St. Louis

ADVERTISING  
201



1

# CATALOGUE

## No. 209

A DAILY GUIDE FOR BUYERS OF  
COMMERCIAL STATIONERY, BLANK BOOKS  
BUSINESS FURNITURE AND  
OFFICE SUPPLIES

ISSUED OCTOBER, 1914



**BUXTON & SKINNER**  
Printing and Stationery Co.

FOURTH STREET, BETWEEN OLIVE AND LOCUST  
SAINT LOUIS

138054622

20-3

**PIN CUPS.**



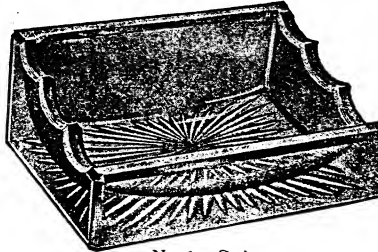
Nos. 286 and 287

**No. 286. Composition Pin Cup.** It is 3 inches in diameter in either black or maroon composition, highly polished. Dozen, \$2.50; each, 25c

**No. 287. Composition Pin Cup.** It is the same as No. 286, but 3 1/2 inches in diameter. Dozen, \$5.00; each, 50c.

**No. 2. Cado.** Same as No. 286, but set in brass base, to be used as a paper weight; dozen, \$5.00; each, 50c.

**No. 1. Cado Pin or Pen Tray.** Pressed glass 2 3/4 x 4 in., with Pen Rack. Dozen.....\$2.50 Each..... 25

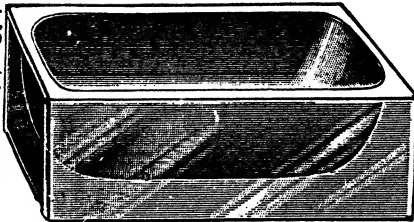


No. 1. Cado

**No. 322. Cut Glass Pin Cup.** Size, 3x2 inches. Dozen, \$3.00 each, 30c.

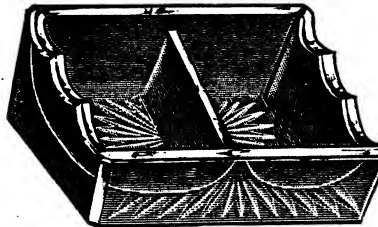
**No. 278. Pressed glass same style as No. 322.** Dozen, \$1.50; each, 15c.

**No. 375. Composition Pin Cup.** Oblong shape, 3x2 inches. Dozen, \$3.50; each, 35c

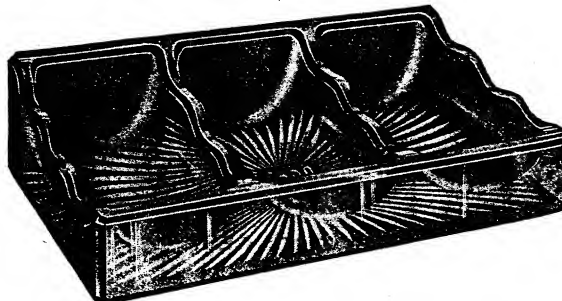


Nos. 322, 278 and 375

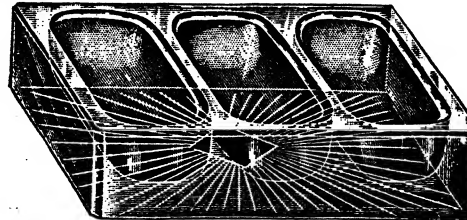
**No. 2. Cado Pin or Pen Tray.** Size 2 3/4 x 4 inches. 2-part, pressed glass, with pen rack. Dos. .... \$2.50 Each..... 25



No. 2. Cado

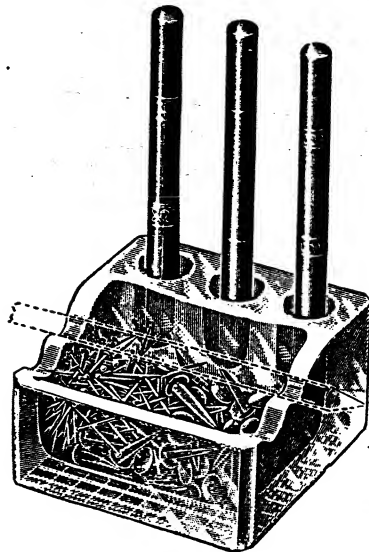


**No. 3. Cado Pin or Pen Tray,** pressed glass 6 1/2 x 2 3/4 inches with notches to hold pen holders and three partitions for pins, fasteners, pens, rubber bands, etc. Dozen, \$5.00; each, 50c.



Nos. 180 and 185

**No. 180 Three-Part Glass Tray.** It is pressed glass 6x3x1 3/8 inches with 3 partitions for pins, clips, etc. Dozen, \$4.00; each 40c.  
**No. 185** Same as above, but Cut Glass, Dozen \$7.50; each 75c.



No. 150

**No. 150. Fountain Pen Clip Cup.** The illustration shows the manner of use of this desk convenience. It is glass, 3x3x2 inches. Dozen, \$2.50; each, 25c.

**PAPER WEIGHTS.**



No. 19

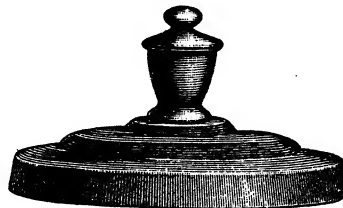
**No. 19. Paper Weight.** It is 2 1/2 inches in diameter, iron covered with green billiard cloth, with nicked knob. Weight, 1 lb. Dozen \$6.00; each 60c.

**Leather Covered Paper Weight.**

**Challenge Paper Weights.** These are iron covered with red leather.



No.	Size	Weight	Dozen	Each
No. 102.	2 1/2 x 1 1/2 inches,	1 pound,	\$4.00	40c
No. 103.	2 1/2 x 2 inches	1 1/2 pounds,	5.00	50c
No. 104.	3 1/2 x 2 1/2 inches	2 "	6.00	60c

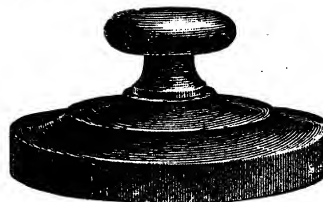


**Iron Paper Weights.**

**No. 1. Oval Weight.** Black japanned, 10 oz. Dozen \$1.50; each 15c.

**No. 2. Oval Weight.** Black japanned, 1 lb. Dozen \$2.00; each 20c.

**No. 3. Round Weight.** Black japanned, 1 1/2 pounds. Dozen \$4.50; each 45c.



**No. 6. Bank Note Weight.** It weighs 2 lbs. and is 7 inches, antique copper; Dozen \$7.50; each 75c.



**No. 10.** 7 x 1 1/2 x 1 1/2 in  
**No. 12.** 8 x 1 1/2 x 1 1/2 in  
**No. 14.** 10 x 2 x 1 1/2 in

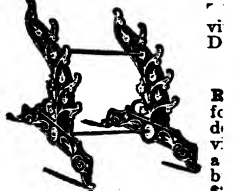
**No. 108. Oblong W** inches, weight 2 lbs., bis \$4.50; each 45c.

**No. 112. Oblong W** inches, weight 4 lbs. bis \$8.00; each 80c

**No. 116. Oblong W** lbs black japanned. D



**No. 15. Pen Rack.** Sitting low on the desk, this rack can't be overturned. It is adamantine bronze. Dozen, \$1.50; each, 15c.



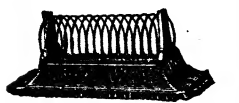
No. 25

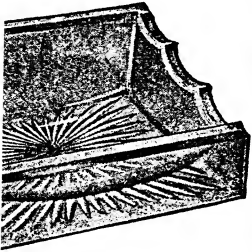


Nos. 114 and 115

**No. 114. Challenge** with coppered wire spring  
**No. 115. Challenge I** are nickel plated. Dozer  
**Adair Spiral Pen Rac** being heavy brass wire.

**Brass Spiral Pen Rac** is made entirely of brass is to be tacked to the Dozen, \$1.00; each, 10c.

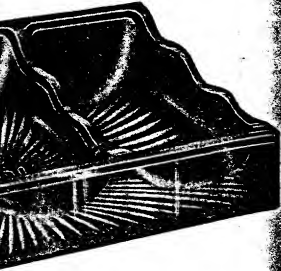




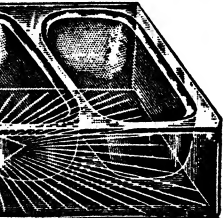
No. 1. Cado



No. 2. Cado Pin or Pen Tray. Size 2 1/2 x 4 inches, 2-part, pressed glass, with pen rack. Doz. .... \$2.50 Each..... .25



pressed glass 6 1/2 x 2 3/4 inches with three partitions for pins, fasteners, 1.00; each, 50c.

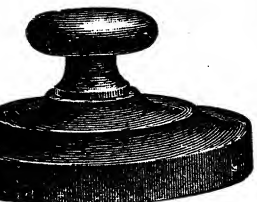


and 185 tray. It is pressed glass 6x3x1 3/4 inches, etc. Dozen, \$4.00; each 40c. at Glass, Dozen \$7.50; each 75c.

**Iron Paper Weights.**

No. 1. Oval Weight. Black japanned, 10 oz. Dozen \$1.50; each 15c.

No 2. Oval Weight. Black japanned, 1 lb. Dozen \$2.00; each 20c.



**Metal Paper Weights.**



No. 2. Handy Weight. Size, 4 x 1 1/2 x 1/2 inches, antique copper finish, weight, 7 lb. Dozen \$4.40; each 45c.  
No. 4. Handy Weight. Size 4 x 1 1/2 x 1/2 inches, antique copper finish, weight 1 1/2 lbs. Dozen \$6.00; each 60c.

No. 6. Bank Note Weight. It weighs 2 lbs. and is 6x1 1/2 x 1/2 inches, antique copper finish. Dozen \$7.50; each 75c.



"County" Paper Weights These are ebony finish, with handles and felt bottoms.

No.	Size	Weight	Dozen	Each
No. 10.	7 x 1 1/2 x 1 inches.	3 lbs.	\$16.50	\$1.65
No. 12.	8 x 1 1/2 x 1 "	4 "	18.50	1.85
No. 14.	10 x 2 x 1 1/2 "	6 "	21.50	2.15

No. 108. Oblong Weight. Size 5x3x1 1/2 inches, weight 2 lbs., black japanned. Dozen \$4.50; each 45c.

No. 112. Oblong Weight. Size 8x3x1 inches, weight 4 lbs. black japanned. Dozen \$3.00; each 30c

No. 116. Oblong Weight. Size 10x3x1 inches, weight 6 lbs black japanned. Dozen \$12.00; each \$1.20.



**Combined Clip and Weight.** It is iron, 3 inches in diameter, nickel plated. The clip is operated by pressure on the center piston as illustrated. It holds papers on all sides at once. Each 50c.

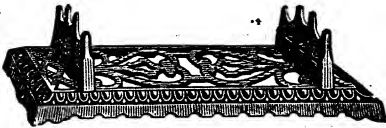
No. 2. Weight and Pin Tray, beveled edge, 2 1/2 x 4 1/2 inch thick, each, 60c.

No. 3. Same, larger, 3x5 1/2 inch thick, each, 90c.

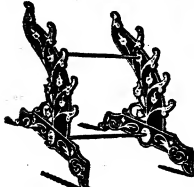
No. 14. Same style, 3x5 1/4 inchesthick, each, 90c.

**PENHOLDER RACKS AND TRAYS.**

No. 15. Pen Rack. Sitting low on the desk, this rack can't be overturned. It is adamantine bronze. Dozen, \$1.50; each, 15c.



No. 25. Pen Rack. This is a neat vine pattern adamantine bronze rack. Dozen, \$2.50; each, 25c.



No. 25

No. 35. Pen Rack. This is for a double desk and is a vine pattern in adamantine bronze. Dozen, \$3.00; each, 30c.



No. 35



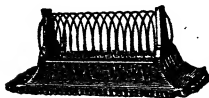
Nos. 114 and 115

No. 114. Challenge Pen Rack. The frame is Japanned, with coppered wire springs. Dozen, \$2.00; each, 20c.

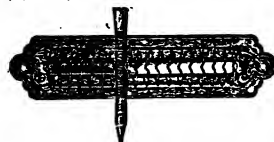
No. 115. Challenge Pen Rack. Both frame and wire spring are nickel plated. Dozen, \$2.50; each, 25c.

Adair Spiral Pen Rack. The base is a glass block, the spiral being heavy brass wire. Dozen, \$3.00; each, 30c.

Brass Spiral Pen Rack. It is made entirely of brass and is to be tacked to the desk. Dozen, \$1.00; each, 10c.



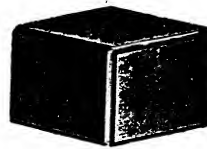
No. 13. Spiral Pen Rack. It is iron, bronze green finish, with large coiled brass wire. Dozen, \$2.00; each, 20c.



"Adair"

**Cut Glass Paper Weights.**

These are first quality cut glass.



No. 1050. 2 1/2 x 2 1/2 x 1 1/2 inches. Each \$0.60  
No. 1060. 2 1/2 x 2 1/2 x 2 " .80  
No. 1070. 2 1/2 x 2 1/2 x 2 1/2 " 1.00

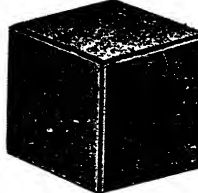
Nos. 1050 to 1070

No. 1120. 1 1/2 x 3 1/2 inches Each \$0.85  
No. 1130. 2 x 4 " 1.00  
No. 1140. 2 1/2 x 4 " 1.25



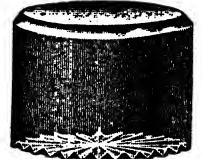
Nos. 1120 to 1140

No. 1350. 2 1/2 inch cube Each \$0.75  
No. 1360. 2 1/2 " " .80  
No. 1370. 3 " " 1.25



Nos. 1350 to 1370

No. 10. Round, cut, beveled edge, fancy star bottom, 2 inches diameter, each, 60c.



No. 10



Nos. 2, 3 and 14

**Glass Penholder Blocks.**

This series are ornamental to a desk, and combine a paper weight and pen rack in one article.

No. 520P. Pen Block. It is pressed glass 3 1/2 x 2 1/2 inches. Each, 20c.

No. 520C. Pen Block. It is the same as No. 520P., in cut glass. Each, 30c.



No. 521P. Pen Block. It is pressed glass 5 1/2 x 2 1/2 inches. Each, 25c.

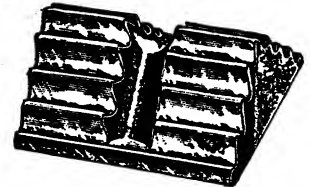
No. 521C. Pen Block. It is the same as No. 521P., in cut glass. Each, 50c.



No. 535P. Pen Block. It is 5 1/2 x 2 1/2 inches, pressed glass. Each, 40c.

No. 535C. Pen Block. It is cut glass, same size and style as No. 535P. Each, 75c.

No. 170. Double-Desk Pen Block. It is pressed glass, 4x4 1/2 x 2 inches, for use on a double desk, both sides having grooves. Dozen, \$3.50; each, 35c.



**PENHOLDER TRAYS.**



No. 1. Enameled Wood Pen Tray. It is 10 inches long, black enameled. Each 25c.

No. 144. Oak Pen Tray. It is polished oak, 10 inches long. Each 25c.



No. 4030-9. Glass Pen Tray. It is 10 inches long, with round ends, cross bars inside. Each 25c.

No. 4031-9. Glass Pen Tray. It is 9 1/4 inches long, with square ends, fluted sides, and cross bars inside. Each 25c.

Prices Subject to Change Without Notice. For Freight Allowance, See Introduction.



CAPITOL INKSTANDS.

BASE SETS



stand. Each \$3.25  
 oak 3.50  
 mahogany 3.75

stands. Each \$5.75  
 oak 6.00  
 mahogany 6.25

2 cut glass stands. Each \$6.50  
 oak 6.75  
 mahogany 7.25

BASE SETS



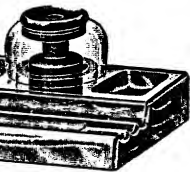
Each \$2.75  
 oak 3.00  
 mahogany 3.25

Each \$4.75  
 oak 5.00  
 mahogany 5.25

No. 56 stands. Each \$5.50  
 oak 5.75  
 mahogany 6.25

ASS BASE SETS

at moderate price.

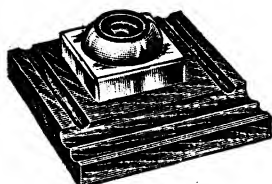


No. 310. Each \$2.00  
 mahogany 2.50



Each \$4.00

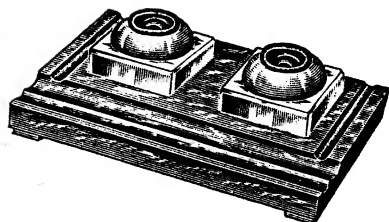
uction.



No. 90-A.

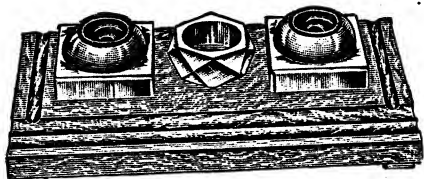
No. 90-A. Capitol. Library style single desk pattern, heavy Colonial Oak Base, 7x7 inches with square pressed glass ink well. Each, \$2.00.

No. 90-B. Mahogany base. Each, \$2.00.



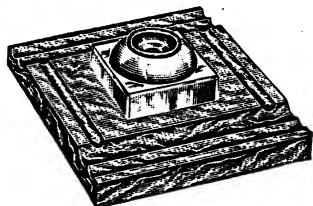
No. 60-A. Capitol. Library style for Single Desk with 2 square pressed glass wells on a heavy Colonial Oak Base 7x12 inches. Price each, \$3.00.

No. 60-B. Mahogany base. Price each, \$3.00.



No. 140-A. Capitol. Single Desk pattern, with 2 square pressed glass ink wells and sponge cup, heavy Colonial Oak Base 7x14 1/2 inches. Price each, \$4.00.

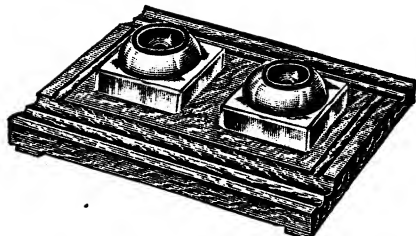
No. 140-B. Mahogany base. Price each, \$4.00.



No. 90-AR.

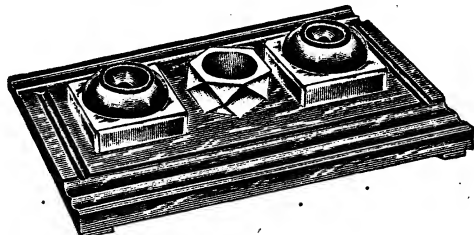
No. 90-AR. Capitol. For Double Desk, heavy Colonial Oak Base 8x9 inches, 1 square pressed glass ink well. Price each, \$2.50.

No. 90-BE. Mahogany base. Price each, \$2.50.



No. 60-AR. Capitol. For Double Desk, heavy Colonial Oak Base 9 1/2 x 12 inches, 2 square pressed glass ink wells. Each, \$3.50.

No. 60-BE. Mahogany base. Each, \$3.50.

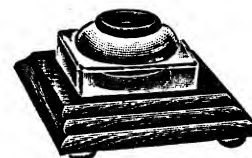


No. 140-AR. Capitol. For Double Desk, heavy Colonial Oak Base 9 1/2 x 14 1/2 inches, with 2 square pressed glass ink wells and sponge cup. Price each, \$4.50.

No. 140-BE. Mahogany base. Price each, \$4.50.

No. 9-A. Capitol. Library style. The base is oak 5 1/2 x 6 1/2 inches, with a square pressed glass well. Each, \$1.25.

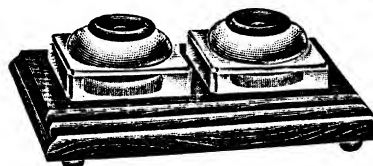
No. 9-B. Mahogany base. Each, \$1.25.



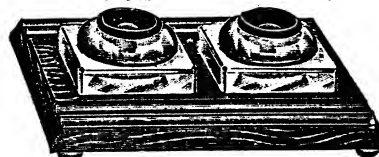
No. 9-A

No. 6-A Capitol. Library style. There are two square pressed glass wells on an oak base. 6 1/2 x 9 1/2 inches. Each, \$2.00.

No. 6-B. Mahogany base. Each \$2.00

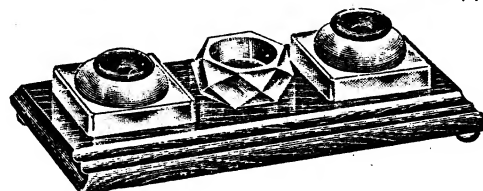


No. 6-A



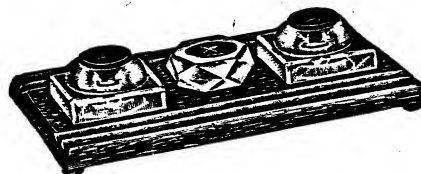
No. 6-AR. Capitol. Library style Double Desk pattern, oak base, 7x9 1/2 inches with two pressed glass ink wells. Each, \$2.50.

No. 6-BR. Mahogany base. Each, \$2.50.



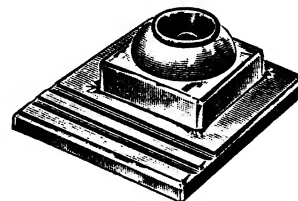
No. 14-A. Capitol. Library style, single desk pattern, base 6 1/2 x 13 1/2 inches, two pressed glass ink wells and sponge cup. Each, \$3.00.

No. 14-B. Mahogany base. Each, \$3.00.

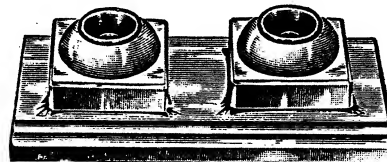


No. 14-AR. Capitol. Library style. This is a double desk pattern, base 8x13 1/2 inches, there being pen racks each side. There are two pressed glass wells and a sponge cup. Each, \$3.50.

No. 14-BE. Mahogany base. Each, \$3.50.



No. 41-A. Capitol. For single desk. The base is plate cut glass, size 6x6 1/2 inches, with a square cut glass well. Price each, \$5.00

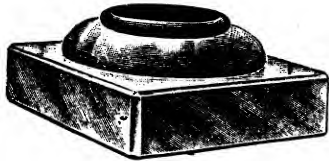


No. 31-A. Capitol. For single desk. The base is plate cut glass, size 6x11 inches with 2 square cut glass wells. Price each, \$8.00.

BUXTON & SKINNER PRINTING AND STATIONERY CO., SAINT LOUIS

Prices Subject to Change Without Notice. For Freight Allowance, See Introduction.

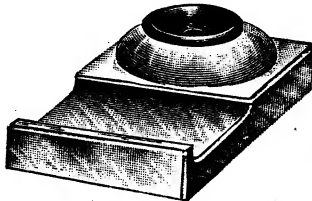
**CAPITOL INKSTANDS—Cont'd**



Nos. 1 and 2.

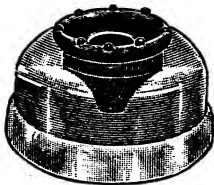
There are but two parts to the Capitol inkstand—a hard rubber funnel and the glass well. Just the right amount of ink is fed, and it is impossible to soil the holder.

No. 1. Capitol. Square. Cut glass,  $3\frac{1}{2} \times 3\frac{1}{2}$  inches. Each, \$1.00.  
No. 2. Capitol. Square. Pressed glass,  $3\frac{1}{2} \times 3\frac{1}{2}$  inches. Each, 50c.



No. 25

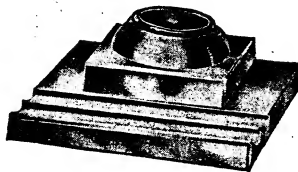
No. 25. Capitol. Pressed glass, with penrack,  $3\frac{1}{2} \times 5\frac{1}{4}$  inches. Each, 75c.



No. 55

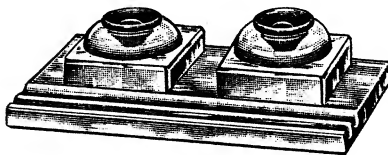
No. 55. Capitol. Pressed glass, round,  $3 \times 1\frac{1}{4}$  inches. Each, 25c.

No. 35. Capitol. Pressed glass, round,  $3\frac{1}{2} \times 2$  inches. Each, 35c.



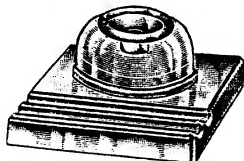
No. 40

No. 40. Capitol. The base is pressed glass,  $6 \times 6\frac{1}{2} \times 1$  inch fitted with a No. 2 inkstand. Complete, \$1.50.



No. 30

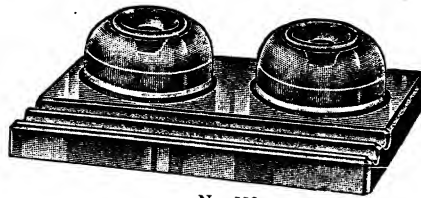
No. 30. Capitol. The base, pressed glass, is  $6 \times 11 \times 1$  inch and is fitted with two No. 2 inkstands. Complete, \$2.50.



No. 551.

No. 551. Capitol. Pressed glass, base  $4\frac{1}{2} \times 4\frac{1}{4}$  inches, for single desk with one No. 55 Well. Each, \$0.50.

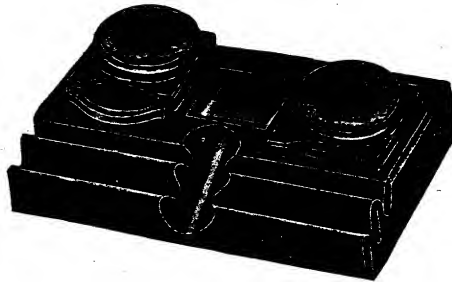
**CAPITOL INKSTANDS—Cont'd**



No. 552

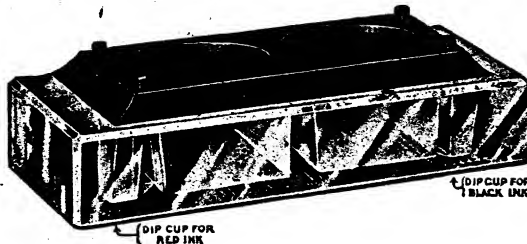
No. 552. Capitol. Pressed glass, base  $4\frac{1}{4} \times 7\frac{1}{2}$  inches single desk with two No. 55 Wells. Each, \$1.00.

**PARAGON INKSTANDS.**



No. 510-A. Composition base and caps, finished to represent Antique Oak, double wells, base  $5 \times 7\frac{1}{4}$  inches. Each, \$2.00.  
No. 510-B. Same in imitation of Mahogany. Each, \$2.00.

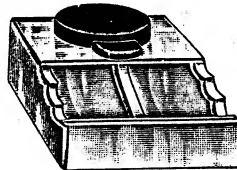
**DUPLEX INKSTANDS.**



The Duplex has two wells for Red and Black Ink, it is a solid, glass base, size  $3\frac{1}{2} \times 6\frac{1}{2}$  inches, with a black composition top which slides to right or left and exposes a small dip cup. Price each, 75c.

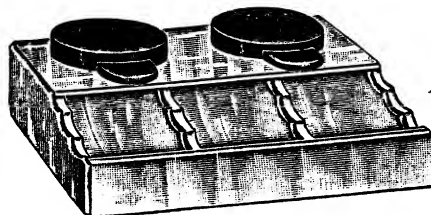
**GEM INKSTANDS.**

The bases of the Gem, Inkstands are pressed glass with pen and pin trays and pen racks. The covers are hard rubber and rotate to uncover the ink.



No. 50

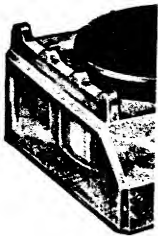
No. 50. Gem. Single well  $4 \times 5\frac{1}{4}$  inches.....Each, 50c.



No. 100

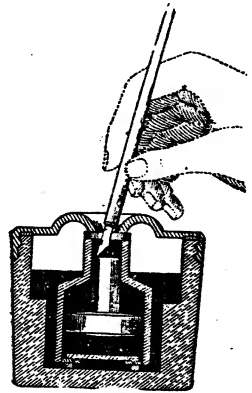
No. 100. Gem. Double well,  $5\frac{1}{4} \times 6\frac{1}{4}$  inches.....Each, \$1.00.

**CHELSEA**



Chelsea. Pressed glass base stopper, with composition top into well, base  $3\frac{1}{4} \times 3$  inches.

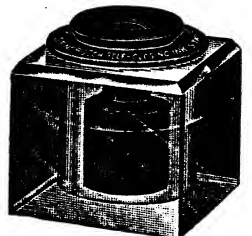
**SENGBUSCH SELF C**



Sectional View

As soon as the pen is withdrawn, the well dirt-pink ink can not spurt out or over fittings.

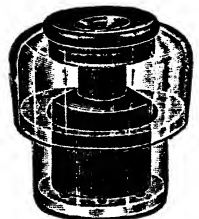
No. 51. Sengbusch. Each, \$1.50.



Nos 52 and 53

No. 52. Sengbusch. Cut \$2.00.  
No. 53. Sengbusch. Pres \$1.75.  
No. 55. Sengbusch. Pre Each, \$1.50.

**Desk**



No. 56

Nos. 56 and 57 can be used on the desk, or into a base.

No. 56. Pressed glass,  $2\frac{3}{4}$  ir  
No. 57. Cut glass, 3 inches.

Prices Subject

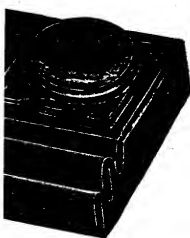
BUXTON & SKINNER PRINTING AND STATIONERY CO., SAINT LOUIS

**INK STANDS—Cont'd**



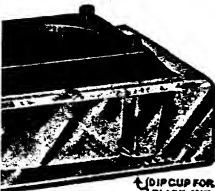
Glass, base 4 3/4 x 7 1/4 inches  
Each, \$1.00.

**INK STANDS.**



1/2 inch caps, finished to represent  
1/2 inches. Each, \$2.00.  
Mahogany. Each, \$2.00.

**INK STANDS.**



1/2 DIP CUP FOR  
BLACK INK

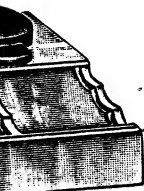
and Black Ink, it is a solid,  
a black composition top  
as a small dip cup. Price

**INK STANDS.**

are pressed glass with pen  
racks are hard rubber and



Each, 50c.



1/2 inches..... Each, \$1.00.

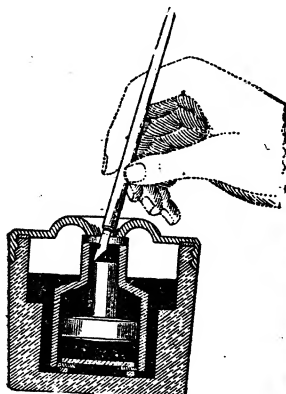
**INTRODUCTION.**

**CHELSEA INK STANDS.**

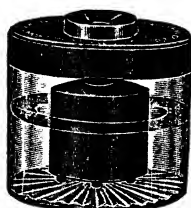


Chelsea. Pressed glass base, penrack on top, patent porcelain stopper with composition top which screws down to force ink into well, base 3 3/4 x 3 inches. Each, \$0.50.

**SENGBUSCH SELF CLOSING INK STANDS.**



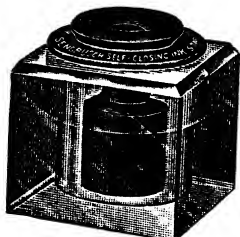
Sectional View



No. 51

As soon as the pen is withdrawn the opening is automatically closed, making the well dirt-proof and evaporation-proof. The ink can not spurt out or overflow. The well has hard rubber fittings.

No. 51. Sengbusch. Pressed glass, diameter 3 inches. Each, \$1.50.

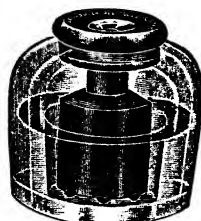


Nos 52 and 53

No. 52. Sengbusch. Cut glass, 3 inches square. Each, \$2.00.

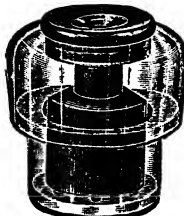
No. 53. Sengbusch. Pressed glass, 3 inches square. Each, \$1.75.

No. 55. Sengbusch. Pressed glass, diameter 3 inches. Each, \$1.50.

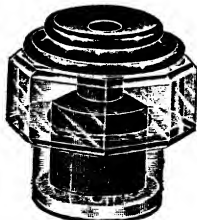


No. 55

**Desk Style**



No. 56



No. 57

Nos. 56 and 57 can be used upon the desk as well as set into the desk, or into a base.

No. 56. Pressed glass, 2 1/4 inches. Each, \$1.50.

No. 57. Cut glass, 3 inches. Each, \$2.00.

**DAVIS AUTOMATIC INK STANDS.**

The Davis Automatic Inkstand is very simple in mechanism, yet perfect in action. The fittings are hard rubber. There is a hollow plunger with funnel top, fitting within a jacket and collar. The plunger floats in the ink. A slight pressure brings to the surface just the right amount of ink fresh from the center of the fluid. When the pen is withdrawn the ink recedes within the well. This keeps it clean and prevents evaporation. The "T" adjustment makes instant and perfect adjustment of the plunger. Funnel can be had either red or black rubber.



No. 201

No. 201. Davis. This is the simplest of the Davis inkstands. Each, \$1.00.



THE "T" ADJUSTMENT  
No. 200

No. 200. Davis. It is 2 1/4 inches in diameter. Each, \$1.50.



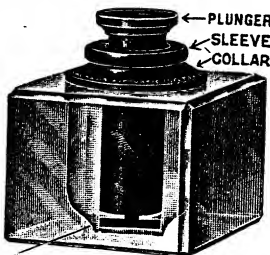
No. 302

No. 302. Davis. This is a handsome fluted pattern in pressed glass, 3x3 inches. Each \$1.50.



No. 305.

No. 305 Davis. A penrack is moulded on the base of this inkstand which is 3x3 inches. Each, \$1.50.

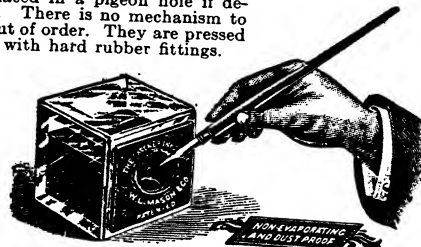


THE "T" ADJUSTMENT  
No. 293

No. 293 Davis. This square pattern inkstand is 3x3x2 1/2 inches, finest cut glass. Each, \$2.00.

**GARDNER INK STANDS.**

In the Gardner Inkstand the dip is in the side. Its peculiar construction prevents evaporation, keeps it clean and allows it to be placed in a pigeon hole if desired. There is no mechanism to get out of order. They are pressed glass with hard rubber fittings.



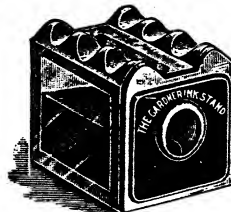
Nos. 7 and 11.

No. 7. Gardner. 3-inch Cube, with plain top. Each, 75c.

No. 11. Gardner. 2 1/4-inch Cube, with plain top. Each, 65c.

No. 9. Gardner. 3-inch Cube, with moulded penrack. Each, 85c.

No. 13. Gardner. 2 1/4-inch Cube, with moulded penrack. Each, 75c.



Nos. 9 and 13

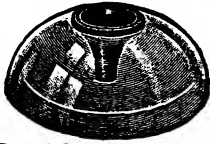
Prices Subject to Change Without Notice. For Freight Allowance, See Introduction.

BUXTON & SKINNER PRINTING AND STATIONERY CO., SAINT LOUIS



**VICTOR INKSTANDS.**

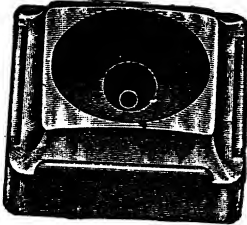
The Victor is an open-dip inkstand that inks the pen just enough and keeps the ink clean and fluid.



No. 1. Victor. Round Crystal glass, 3 1/2 inches in diameter, 1 1/2 inches high. Each, 30c.

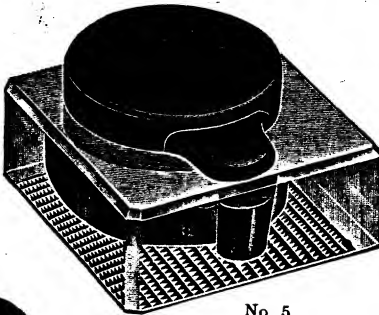


No. 63. Victor. Round pressed glass, three inches in diameter. Each, 30c.

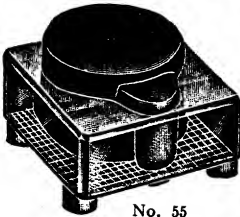


No. 3. Victor. Square Crystal glass, 4 1/2 x 4 1/2 x 1 1/2 inches. Each, 50c

No. 5. Victor Inkstand. It is a glass block with chased bottom. 3 inches square and 1 1/2 inches over all. The top is black rubber and can be lifted off. In use, it is rotated, the small ink aperture being uncovered. Each, 30c.



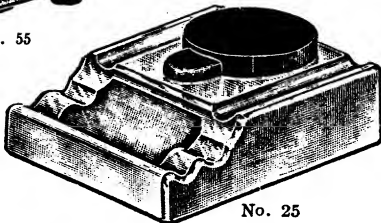
No. 5



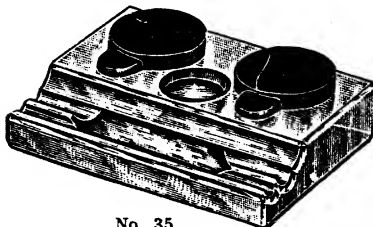
No. 55

No. 55. Victor. It is the same as No. 5, except it has feet moulded on the four corners. Each, 30c.

No. 25. Victor Ink Stand. Size, 4 x 5 1/2 in. Crystal glass, with pen rack moulded in front. Each, 75c.

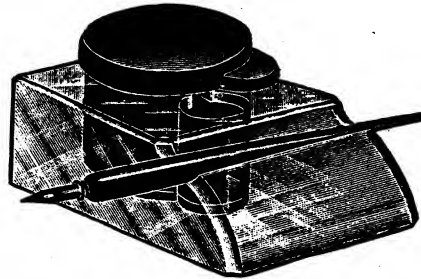


No. 25



No. 35

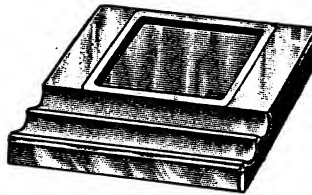
No. 35. Victor Ink Stand. Size, 5 x 7 inches. Crystal glass. This double stand has one well with a red cover for red ink and one with black cover for black ink. Between the wells is a well for pins, clips, etc. A pen rack is moulded in front. Each, \$1.25.



No. 85. Victor. It is Crystal glass, 3 x 4 1/2 in. with pen holder groove and revolving rubber cap. Each 35c.

**GLASS BASES FOR INKSTANDS.**

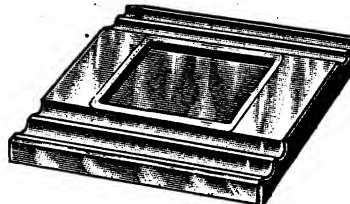
This is a very handsome line of bases for single and double desks, made to hold Ink Stands 3 inches square.



Nos. 1 and 2

No. 1. Pressed Glass Base. 6 x 6 1/2 in., single desk, for one 3 in. ink stand. Each, 75c.

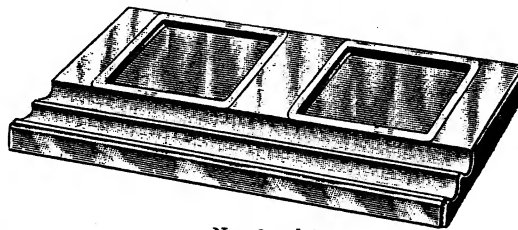
No. 2. Cut Glass Base. Same as No. 1, but cut glass. Each, \$1.50.



Nos. 5 and 6

No. 5. Pressed Glass Base. Double desk Style, 6 x 11 in. for one 3 in. ink stand. Each, \$1.00.

No. 6. Cut Glass Base. Same as No. 5, but cut glass. Each, \$2.25.



Nos. 3 and 4

No. 3. Pressed Glass Base. 6 1/2 x 7 in., single desk style, for two 3 in. ink stands. Each, \$1.25.

No. 4. Cut Glass Base. Same as No. 3 but cut glass. Each, \$3.00.



Nos. 7 and 8

No. 7. Pressed Glass Base. 7 x 11 in., for double desk, for two 3 in. ink stands, a space between for sponge cup. Each, \$2.00.

No. 8. Cut Glass Base. Same as No. 7 but cut glass. Each, \$3.75.

**BANKERS' INKSTANDS**

Pressed



No. 60

No. 60 is universal roads a 2 1/2 inch \$1.50;

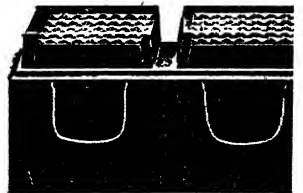
**Bankers' Square Inkstand**  
These are pressed glass, square, with cover.

No.	Size	Dozen
1103.	2 inches square,	\$1.50
1105.	2 1/2 " " "	2.00
1107.	3 " " "	3.00
1109.	3 1/2 " " "	4.00

**Bankers' Cut Glass Inkstand**  
fine cut glass, with cover.

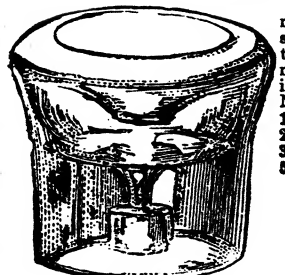
No.	Size	Dozen
1010.	1 1/2 inches square,	1.50
1020.	2 " " "	2.00
1030.	2 1/2 " " "	2.50
1040.	3 " " "	3.00
1050.	3 1/2 " " "	3.50
1060.	4 " " "	4.00
1070.	4 1/2 " " "	4.50
1080.	5 " " "	5.00
1090.	5 1/2 " " "	5.50
1100.	6 " " "	6.00

**Bankers' Double Desk Inkstands**



No. 1120

**PRESSED GLASS**



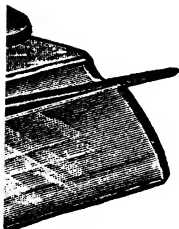
Nos. 1 and 2 Safety.

No. 1. Practical Inkstand. It is the same as the "Safety," with a polygonal base, but without the opening or cork in the bottom, 3 inches in diameter. Gross, \$15.00; dozen, \$1.50; each, 15c



No. 308. Safety Inkstand. The fitted with a cover. Diameter. 1 1/2 inches 2 " " " 2 1/2 " " " 3 " " " 3 1/2 " " "

clean and fluid.



1/4 in. with pen holder groove

**INKSTANDS.**

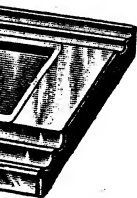
s for single and double desks, re.



2

single desk, for one 3 in. ink

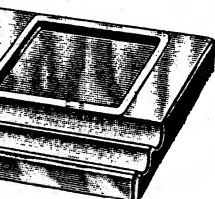
No. 1, but cut glass. Each,



6

desk Style, 6x11 in. for one

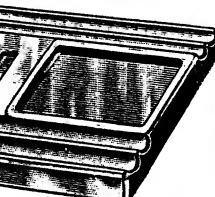
No. 5, but cut glass. Each, \$2.25.



4

in., single desk style, for two 3

as No. 3 but cut glass.



8

for double desk, for two 3

ge cup. Each, \$2.00.

No. 7 but cut glass. Each, \$3.75.

Introduction.

**BANKERS' INKSTANDS.**

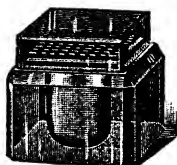
Pressed Glass.



No. 60

**Bankers' Square Inkstands.** These are pressed glass, square, with cover.

No.	Size	Dozen	Each
1103.	2 inches square,	\$1.50	15c
1105.	2 1/2 " " "	2.00	20c
1107.	3 " " "	3.00	30c
1109.	3 1/2 " " "	4.00	40c



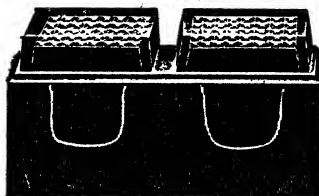
No. 1010

Cut Glass.

**Bankers' Cut Glass Inkstands.** These are square shape, fine cut glass, with cover.

No.	Size	Each
1010	1 1/2 inches square	\$0.25
1020	1 3/4 " " "	.30
1030	2 " " "	.30
1040	2 1/4 " " "	.40
1050	2 1/2 " " "	.65
1060	2 3/4 " " "	.70
1070	3 " " "	.75
1080	3 1/4 " " "	1.00
1090	3 1/2 " " "	1.75
1100	4 " " "	2.00

**Bankers' Double Inkstands.**

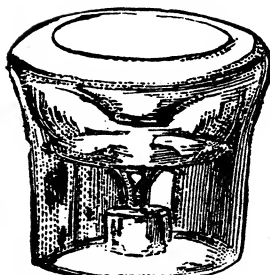


These are oblong, 2 wells in a block, cut glass, with covers.

No.	Size	Each
1120.	1 1/2 x 3 1/2	\$0.60
1130.	2 1/4 x 4	.85
1140.	2 1/2 x 4 1/2	1.25
1150.	2 3/4 x 5	1.50
1160.	2 1/2 x 5 1/2	2.50
1170.	3 x 6	3.00

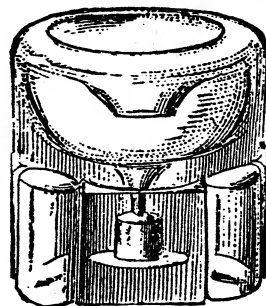
No. 1120

**PRESSED GLASS INKSTANDS.**



Nos. 1 and 2 Safety.

**No. 1. Practical Inkstand.** It is the same as the "Safety," with a polygonal base, but without the opening or cork in the bottom. 3 inches in diameter. Gross, \$15.00; dozen, \$1.50; each, 15c



Nos. 3 and 5 Safety

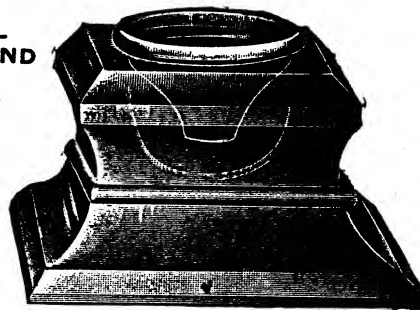
**FOR RED INK.**

**No. 308. Glass-Stoppered Inkstand.** The glass is thick and the well is fitted with a ground glass stopper.

Diameter.	Dozen.	Each.
1 1/2 inches	\$1.50	15c
2 " "	2.00	20c
2 1/2 " "	2.50	25c
3 " "	3.00	30c
3 1/2 " "	3.50	35c
4 " "	4.00	40c



**ANVIL INKSTAND**



**No. 405.** It is pressed glass, the base being 4 inches square, the total height being 2 1/4 in. There is a removable glass funnel which allows just enough ink for the pen. The funnel prevents evaporation and keeps out the dust. Each 25c Dozen \$2.50.

No. 405.

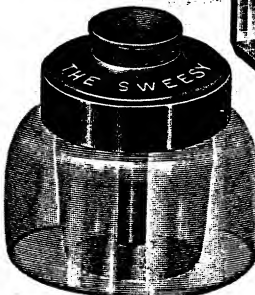


**SPOTLESS INKSTAND.**

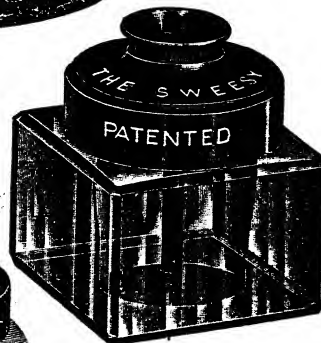
It is an elaboration of the "safety" principle, being fitted with screw metal top and removable glass funnel. Each, 35c.

**SWEESY INKSTANDS.**

The Sweesy is a fountain inkstand in which the funnel is held in place by an elastic rubber diaphragm, through which the stem passes.



No. 302



No. 306

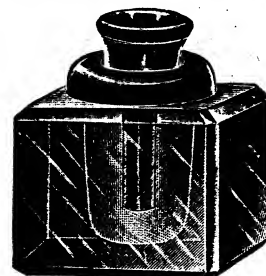
**No. 306.** Crystal glass, 2 1/4 inches square. Each, 60c.  
**No. 302.** Round, 3 inches in diameter. Each, 75c.

**ROYAL INKSTANDS.**

This is a line of low priced but very satisfactory "fountain" inkstands. They are fitted with hard rubber caps and each has a hard rubber funnel suspended by a soft rubber diaphragm. Pressure by the pen on the funnel brings the ink to the surface. The ink recedes when the pen is withdrawn.



No. 309



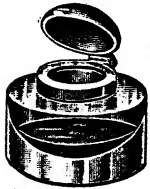
Nos. 307, 311, 319

**No. 311 Royal.** Crystal glass 2 1/4 inches square. Each, 25c  
**No. 307 Royal.** Crystal glass 2 1/4 inches square. Each 30c.  
**No. 319 Royal.** Crystal glass 3 inches square, chased bottom, Each 50c.  
**No. 309 Royal.** Crystal glass, round, 2 3/4 inches in diameter. Each 25c.

Prices Subject to Change Without Notice. For Freight Allowance, See Introduction.

BUXTON & SKINNER PRINTING AND STATIONERY CO., SAINT LOUIS

GLASS AND METAL INKSTANDS.

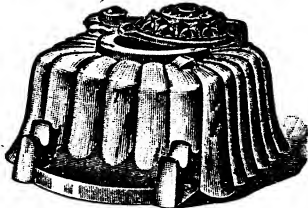


No. 157

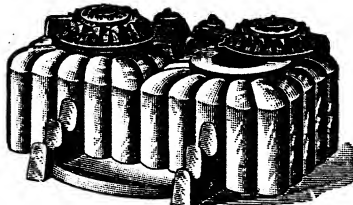
With Swivel Covers.

The following have glass bodies with moulded pen racks and swivel iron covers.

No. 157. Shipper's Inkstand. It is heavy, fire polished glass, 3 inches in diameter with dished bottom and nickel-plated hinged cover. The top is threaded directly upon the glass, without plaster. Each, 30c.



No. 161

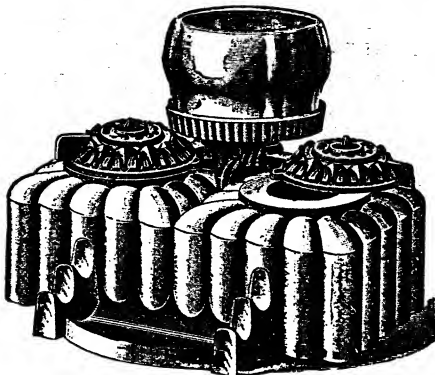


No. 163

No. 161. Single well, size, 4 3/4 x 4 3/4 inches. Each, 50c.

No. 163. Double well, size 6 x 3 inches. Each, 75c.

No. 165. Combination, two wells and sponge cup, size, 6x3 inches. Each, \$1.00

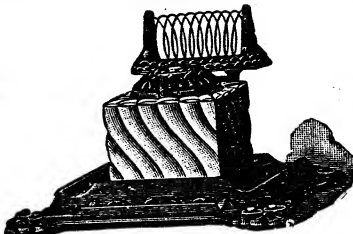


No. 165

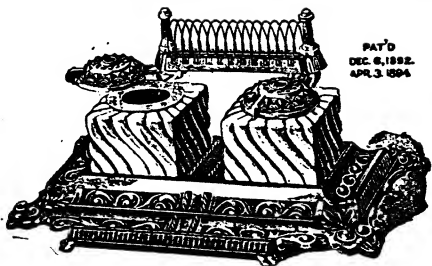
With Coil Wire Pen Racks.

The following inkstands are surmounted with coil wire pen racks. The bases are iron and the wells have swivel iron covers. The iron work is bronze green finish.

No. 800. Single well, base 5 1/4 x 6 inches. Each, 75c

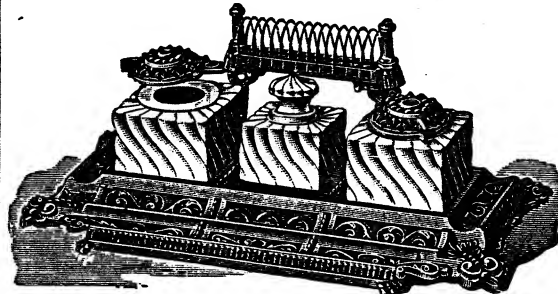


No. 800



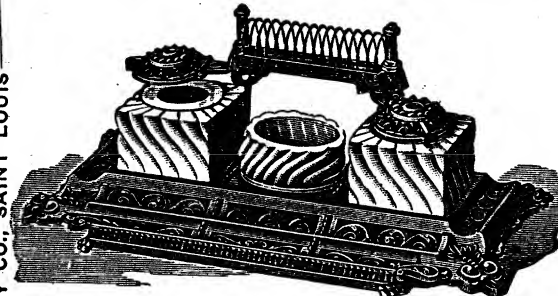
No. 805

No. 805. Double well, base 9 1/4 x 6 1/4 inches. Each, \$1.25



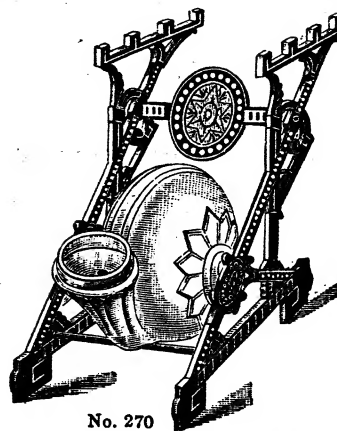
No. 815

No. 815. Triple well, base 12x6 1/2 inches. Each, \$1.50



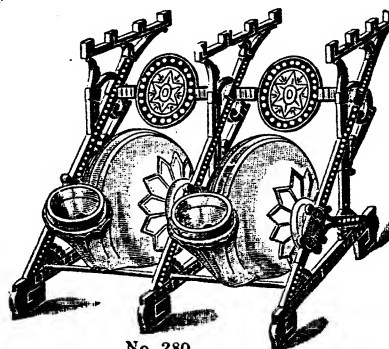
No. 825

No. 825. Combination, two ink wells and sponge cup. Base 12x6 1/2 inches. Each, \$1.50.



No. 270

No. 270. The revolving well is fitted in an iron frame, finished in enamel. Each, 30c.



No. 280

No. 280. There are two revolving wells, the frame being finished in enamel. Each, 50c.



No. 350. The Ink Well being enameled iron. Each



No. 560. There are 7 iron base. Each, \$1.00.

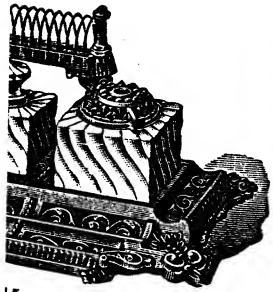
No. 12. Daily Calendar japanned. Complete with pad, 60c.  
No. 25. Same style as 1 pad, 60c.



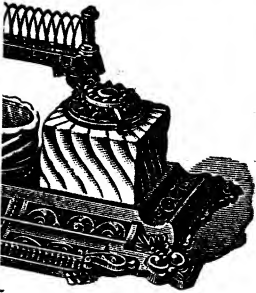
No. 2. Daily Calendar, iron, black japanned.  
No. 42. Daily. Same Complete with pad, 60c.  
Pads only, for Nos. 10c.

BUXTON & SKINNER PRINTING AND STATIONERY CO., SAINT LOUIS

GLASS AND METAL INKSTANDS—Cont'd.



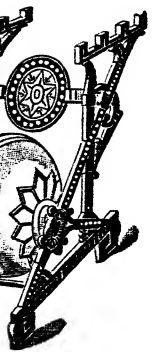
15  
ches..... Each, \$1.50



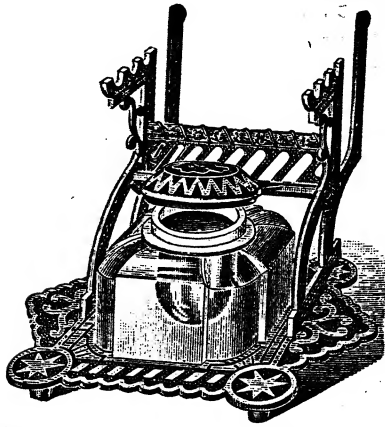
5  
nk wells and sponge cup.  
..... Each, \$1.50.



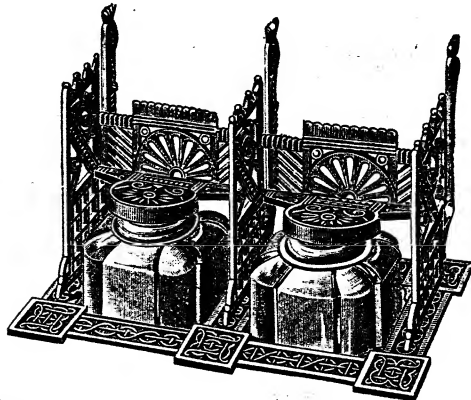
itted in an iron frame, fin-  
..... Each, 30c.



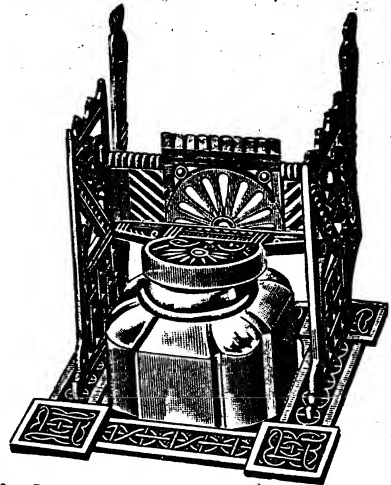
g wells, the frame being  
..... Each, 50c.



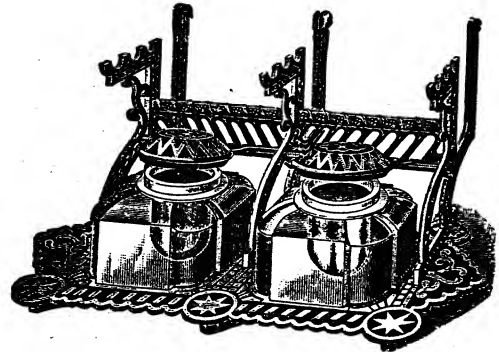
No. 350. The Ink Well has a hinged metal cover, the frame being enameled iron. Each, 75c.



No. 560. There are two wells with hinged covers, enameled iron base. Each, \$1.00.



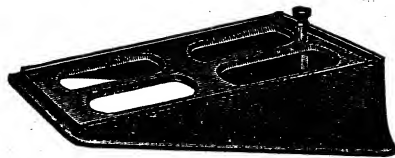
No. 550. In this style frame there is a blotter holder as well as pen rack. The frame is enameled iron. The well has a hinged cover. Each, 75c.



No. 360. There are two wells with hinged covers, the base and pen rack being finished in enamel. Each, \$1.00.

BUXTON & SKINNER PRINTING AND STATIONERY CO., SAINT LOUIS

CALENDAR PADS AND STANDS.



No. 12. Daily Calendar Stand. Low pattern, iron, black japanned. Complete with pad, 25c.

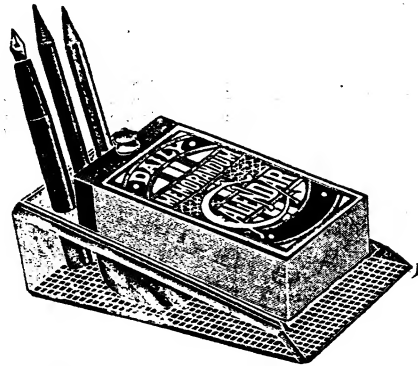
No. 25. Same style as No. 12, full gilt finish. Complete with pad, 60c.



No. 2. Daily Calendar Stand. Heavy weight high pattern, iron, black japanned. Complete with pad, 35c.

No. 42. Daily. Same style as No. 2, full nickel plated. Complete with pad, 60c.

Pads only, for Nos. 2, 12, 20, 25 and 42, dozen, \$1.00; each, 10c.



No. 20. Daily. Glass base with three places to hold pens or pencils at back. Complete with pad, 60c.

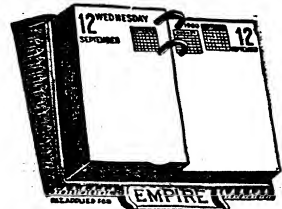
Empire Stands.

No. 5. Black Japanned. Complete, 75c.

No. 6. Nickel Plated. Complete, \$1.00.

No. 7. Oxidized Copper. Complete, \$1.00.

Empire Pads only, each, 35c.



BUXTON & SKINNER

Prices Subject to Change Without Notice. For Freight Allowance, See Introduction.

roduction.

